

# ENIS

European Network on International Student Mobility  
**Connecting Research and Practice**

**13-15 | may**

**Tbilisi | Georgia**

**2024 ENIS**  
Conference programme



European Network on International Student Mobility  
Connecting Research and Practice

**Tbilisi**

**13-15 | may**

**Join**  
us!

**Click here** to register online

**Deadline:** 1 | mar | 2024



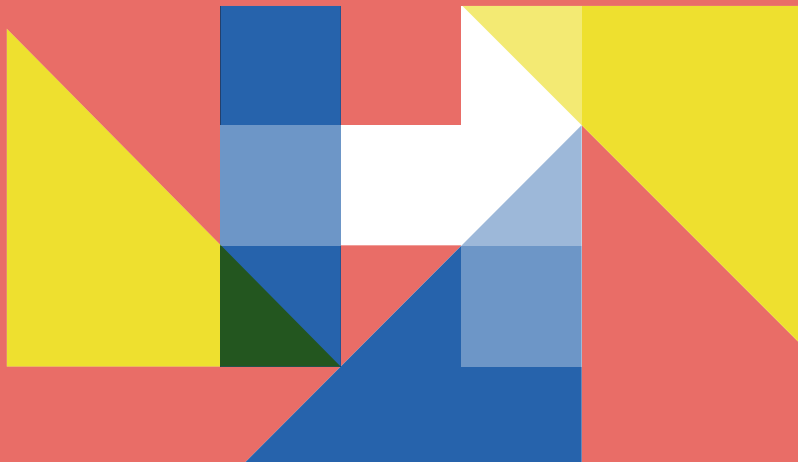


European Network on International Student Mobility  
Connecting Research and Practice

**12 | may**

**sunday**

**day 0**  
**Pre-conference**  
**activities**



# day 0 schedule

12 | may

 LIBERTY SQUARE | in front of the Tbilisi City Assembly



**17:00-19:00**  
Guided walking tour  
with local ESN section



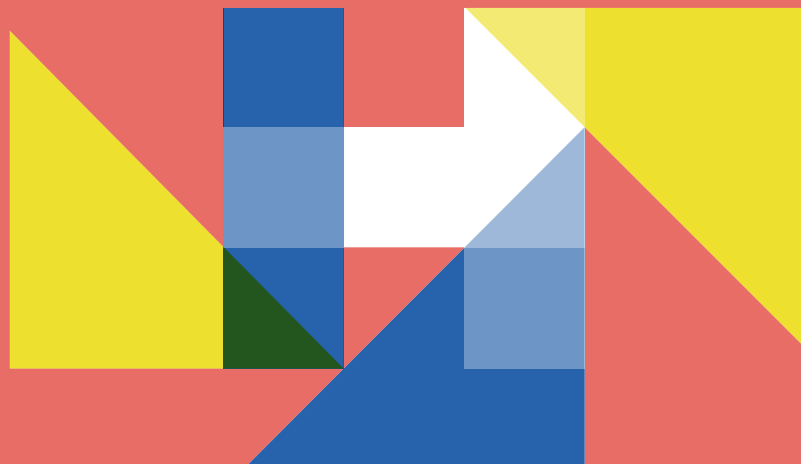
European Network on International Student Mobility  
Connecting Research and Practice

**13 | may**

**monday**

**day 1**  
**Conference  
programme**

Join us online **here** ▶



# day 1 schedule

13 | may

## THE NATIONAL PARLIAMENTARY LIBRARY OF GEORGIA



**10:00-10:15**

### Opening of 2nd ENIS Conference

Christof Van Mol (Action Chair | Tilburg University) & Ani Chelisvili (Local organizer | Business and Technology University Tbilisi)



**10:15-10:40**

### Welcome address

Dr. Giorgi Amilakhvari (Ministry of Education, Science, and Youth) and Prof. Dr. Nino Enukidze (Rector Business and Technology University)



**10:45-11:30**

### Opening lecture

'Connecting Research and Practice in International Student Mobility: themes, challenges and shifting paradigms'  
Hans de Wit (Boston College)



**11:30-12:00**

### Coffee break



**12:00-13:00**

### Spotlight session | Results from ENIS COST Action

Merve Zayim-Kurtay (Middle East Technical University), Rúna V. Guðmarsdóttir (Rannis), Eero Loonurm (Study in Estonia), Sahizer Samuk Carignani (IMT School for Advanced Studies Lucca), Sanam Roohi (Institute for Advanced Studies in the Humanities (KWI)) & Zain Abdin (University of Eastern Finland)

## ROOMS HOTEL TBILISI | Floor -1



**13:00-14:30**

### Lunch break



**14:30-16:00**

### Session 1.1 |

ISM determinants and trajectories

### Session 1.2 |

Social inequalities in ISM

### Session 1.3 |

What is the impact of digitalization on ISM at different levels, national and institutional? Opportunities and challenges



**16:00-16:30**

### Coffee break



**16:30-18:00**

### Session 2.1 |

Trends and experiences of ISM

### Session 2.2 |

Social and cultural integration of students

### Session 2.3 |

Contextualizing practices, challenges, and potentials of virtual internationalization for teaching, learning, and university collaborations

# SPEAKERS & CHAIRS | Who's who



## 10:45 - 11:30 | Opening lecture

'Connecting Research and Practice in International Student Mobility: themes, challenges and shifting paradigms'

### Hans de Wit (Boston College)

International student mobility continues to be the main component of internationalization of higher education, both in research and in practice. But what we mean by international student mobility is not always clearly defined in research and practice. And the same applies to its positioning in the broader study and policy on internationalisation. What are the key themes and challenges, and what may be the main shifting paradigms for the present and future of international student mobility and internationalisation in higher education.



## 14:30 – 16:00 | Session 1.1 | ISM determinants and trajectories

### Chair: Elspeth Jones | Leeds Beckett University

#### Tracing life trajectories of overseas educated Chinese students: A network analysis of biographical data from 1847 to 1991

Damir Padieu (Trier University) and Queenie K.H. Lam (Y-Europe Consulting)

#### Better schools, better parties, better lives: Investigating the complex networks of credit and degree student mobility

Micol Matilde Morellini (University of Oxford) and Per Block (University of Zurich)

#### Developing innovative and participatory research designs: international students as participants and co-researchers

Vera Spangler (University of Surrey)



## 14:30 – 16:00 | Session 1.2 | Social inequalities in ISM

### Chairs: Georgiana Mihut | University of Warwick & Irma Budginaite-Mackine | Vilnius University

#### Comparing mobilities: Strategies, lived experiences, and future dreams of international students

Mette Ginnerkov-Dahlberg (Uppsala University) & Karen Valentin (Aarhus University)

#### Pandemic, war and cumulative precarity: Geo-spatialized configurations of insecurity and resilience among South Asian students in a Finnish University Town

Zain Abdin (University of Eastern Finland) and Sanam Roohi (Institute for Advanced Studies in the Humanities)



#### Social Inequalities in International Student Mobilities: General Systematic Review Findings

Irma Budginaite-Mackine (Vilnius University) and Katharina Resch (University of Vienna)



# SPEAKERS & CHAIRS | Who's who



## 10:45 - 11:30 | Opening lecture

'Connecting Research and Practice in International Student Mobility: themes, challenges and shifting paradigms'

### Hans de Wit (Boston College)

International student mobility continues to be the main component of internationalization of higher education, both in research and in practice. But what we mean by international student mobility is not always clearly defined in research and practice. And the same applies to its positioning in the broader study and policy on internationalisation. What are the key themes and challenges, and what may be the main shifting paradigms for the present and future of international student mobility and internationalisation in higher education.



## 14:30 – 16:00 | Session 1.1 | ISM determinants and trajectories

### Chair: Elspeth Jones | Leeds Beckett University

#### Tracing life trajectories of overseas educated Chinese students: A network analysis of biographical data from 1847 to 1991

Damir Padieu (Trier University) and Queenie K.H. Lam (Y-Europe Consulting)

#### Better schools, better parties, better lives: Investigating the complex networks of credit and degree student mobility

Micol Matilde Morellini (University of Oxford) and Per Block (University of Zurich)

#### Developing innovative and participatory research designs: international students as participants and co-researchers

Vera Spangler (University of Surrey)



## 14:30 – 16:00 | Session 1.2 | Social inequalities in ISM

### Chairs: Georgiana Mihut | University of Warwick & Irma Budginaite-Mackine | Vilnius University

#### Comparing mobilities: Strategies, lived experiences, and future dreams of international students

Mette Ginnerkov-Dahlberg (Uppsala University) & Karen Valentin (Aarhus University)

#### Pandemic, war and cumulative precarity: Geo-spatialized configurations of insecurity and resilience among South Asian students in a Finnish University Town

Zain Abdin (University of Eastern Finland) and Sanam Roohi (Institute for Advanced Studies in the Humanities)



#### Social Inequalities in International Student Mobilities: General Systematic Review Findings

Irma Budginaite-Mackine (Vilnius University) and Katharina Resch (University of Vienna)





## SPEAKERS & CHAIRS | Who's who



**14:30 – 16:00 | Session 1.3** | Practitioners speaking: What is the impact of digitalization on ISM at different levels, national and institutional? Opportunities and challenges

**Chair: Adriana Perez-Encinas | Autonomous University Madrid**

**Speakers: Emrys Gerritse (Oslo Metropolitan University), Cristina Fit (Executive Agency for Higher Education, Research, Development and Innovation Funding) & Anne-Sophie Hokkannen (Finnish National Agency for Education)**

This session takes the opportunity of bringing in new ISM experts voices into the picture to discuss on impact of digitalization on ISM at different levels and from different perspectives. A set of short presentations will identify and address a number of opportunities and challenges related to the topic. The main goal of ISM experts at different higher education levels (national and local) is to share their professional experiences and insights and provide food for thought for a roundtable debate on the opportunities and challenges of digitalization on ISM



**16:30 – 18:00 | Session 2.1** | Trends and experiences of ISM

**Chair: Fiona Hunter | University of the Sacred Heart Milan**

**A longitudinal study of Chinese students' application experiences to UK universities via education agents using interpretative phenomenological analysis**

Ying Yang (The University of Manchester)

**International Student Mobility Trends at Public and Private Higher Education Institutions in Türkiye**

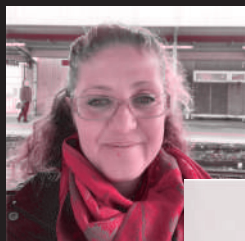
Sevgi Kaya-Kasikci (Boston College), Merve Zayim-Kurtay (Middle East Technical University) & Yasar Kondakci (Middle East Technical University)

**Strategies of social reproduction: medical students from Germany in central and eastern Europe from a centre-periphery perspective**

Gregor Schäfer (University of Copenhagen)



## SPEAKERS & CHAIRS | Who's who



**16:30 – 18:00 | Session 2.2** | Session of WG3 (social and cultural integration of students)

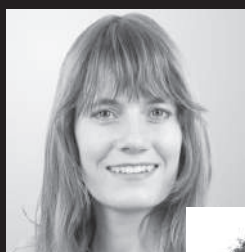
**Chair: Betül Bulut Şahin (Middle East Technical University) & Zeynep Köylü (University of Basel)**

**The role of languages in shaping sociocultural integration during SA**

Sanja Marinov Vranješ (University of Split) & Višnja Pavičić Takač (University of Osijek)

**Fishbowl Activity on Researcher-Practitioner Collaboration on ISM and Sociocultural Integration**

Betül Bulut Şahin (Middle East Technical University) & Zeynep Köylü (University of Basel)



**16:30 – 18:00 | Session 2.3** | Contextualizing practices, challenges, and potentials of virtual internationalization for teaching, learning, and university collaborations

**Chair: Jana Berg | German Centre for Higher Education Research and Science Studies & Luzia Ferreira Santos | German Centre for Higher Education Research and Science Studies**

**Digital Educational Offers for Prospective Students With a Refugee Background – Insights of the German Success Project**

Sarah Nell-Müller (Johannes Gutenberg-University Mainz), Roland Happ (Leipzig University) & Olga Zlatkin-Troitschanskaia (Johannes Gutenberg-University Mainz)

**Internationalizing the Curriculum in Practice**

Amit Marantz-Gal (Sapir College)





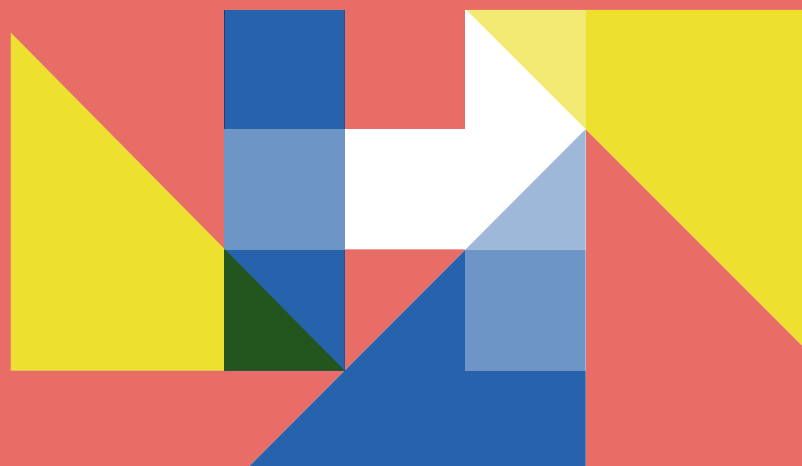
European Network on International Student Mobility  
Connecting Research and Practice

**14 | may**

**tuesday**

**day 2**  
**Conference  
programme**

Join us online **here** ►



# day 2 schedule

14 | may

**BUSINESS AND TECHNOLOGY UNIVERSITY | Central Event Room****10:00-11:30**

Workshop on connecting research and practice

Adriana Perez-Encinas (Autonomous University Madrid) &amp; Wim Gabriels (Erasmus Student Network)

**11:30-12:00**

Coffee break

**12:00-13:30****Session 3.1 | Central Event Room**  
Global ISM flows**Session 3.2 | Event Room, 4<sup>th</sup> Floor**  
Outcomes of international student mobility**Session 3.3 | Room 303, 3<sup>rd</sup> Floor**  
Social and cultural integration of international students**13:30-14:30**

Lunch break

BTU yard

**14:30-16:00**Plenary session of WG5 |  
Event Room, 4<sup>th</sup> Floor

Giorgio Marinoni (International Association of Universities) and Cosmin Nada (University of Porto)

**16:00-16:30**

Coffee break

**16:30-17:00**

Poster session

Central Event Room

**17:00-18:00**

World Café session

 Event Room, 4<sup>th</sup> Floor**19:30**

Joint dinner

Restaurant ETNOGRAPHER

## SPEAKERS & CHAIRS | Who's who



10:00 – 11:30 | Workshop

Connecting research and practice

**Adriana Perez-Encinas (Autonomous University Madrid)  
& Wim Gabriels (Erasmus Student Network)**



12:00 – 13:30 | Session 3.1 | Global ISM flows

**Chair: Yasar Kondakci (Middle East Technical University)  
& Queenie Lam (Y-Europe Consulting)**

**International Student Mobility: Pushing-pulling Factors for  
Albanian international students**

Denada Liça & Silvana Gashi ("Aleksander Moisiu" University of  
Durrës)

**Language as a macro-level driver of international student  
mobility**

Farkhad Alimukhamedov (Le Laboratoire des Sciences Sociales du  
Politique - Sciences Po Toulouse)

**Developing innovative and participatory research designs:  
international students as participants and co-researchers**

Alyona Ovchinnikova (University of the Sacred Heart Milan) & Elspeth  
Jones (Leeds Beckett University)



# SPEAKERS & CHAIRS | Who's who



12:00 – 13:30 | Session 3.2 | Outcomes of international student mobility

**Chair: Jannecke Wiers-Jenssen | NIFU & John Cullinan | University of Galway**

**Does study abroad pay off during recruitment? - Evidence from a labour market experiment in the Netherlands, Belgium and Spain**

Christof Van Mol (Tilburg University), Martyna Ozaist (Tilburg University), Adriana Perez-Encinas (Autonomous University Madrid) & Paola diMarzo (Erasmus Student Network)

**The Labor Market Effects of Studying Abroad: Evidence from the United States**

Daniel Klasik (University of North Carolina at Chapel Hill) & Melissa Whatley (SIT Graduate Institute)

**The career impacts of professional education undertaken abroad**

Ann Cecilie Bergene (NIFU), Ida Drange (NIFU) & Jannecke Wiers-Jenssen (NIFU)



12:00 - 13:30 | Session 3.3 | Social and cultural integration of international students

**Chair: Hans de Wit | Boston College**

**Navigating Cross-Cultural Waters: A Qualitative Case Study on the Social and Cultural Integration of International Students**

Mete Sipahioglu (Samsun University)

**International students and everyday multiculturalism: Rethinking community connections**

Jenna Mittelmeier (University of Manchester)

**The pedagogy of studying abroad: A case study of Chinese students in the Netherlands**

Lina Jiang (University of Amsterdam)





## SPEAKERS & CHAIRS | Who's who



14:30 – 16:00 | Plenary session of WG5

**Chair:** Giorgio Marinoni | International Association of Universities, Cosmin Nada | University of Porto & Irina Ferencz | ACA

**Examples of cooperation between researchers and practitioners in Working Group 5**

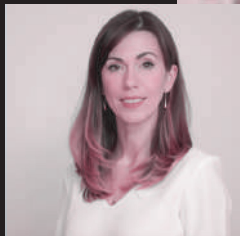
Irina Ferencz (ACA), Cosmin Nada (University of Porto) & Betül Bulut Şahin (Middle East Technical University)

**Discussion between researchers, practitioners and the public**

Joyce Aguiar (Centre for Research in Higher Education Policies - Portugal), Annette Kratz, Christof Van Mol (Tilburg University) & Bozidar Grigic (CMEPIUS)

**Campfire – a better view on student mobility outside the ivory tower**

Adriana Perez-Encinas (Autonomous University Madrid), Rúna V. Guðmarsdóttir (Rannis), Eero Loonurm (Study in Estonia) & Wim Gabriels (Erasmus Student Network)



16:30 - 17:00 | Poster session

**Short-Term programmes and international mobility: Analysis of impact on students from a Disadvantaged Background in the UK**

Alizée Cordes (Teesside University)

**Integration into Academic and University Life. The Experiences of First-year International Students**

Georgina Kasza (Tempus Public Foundation)

**Understanding the Motivations for International Graduate Student Mobility to Norway – Navigating Decisions to Pursue a Master's Degree Abroad and within the Context of the COVID-19 Pandemic**

Tracy Waldman (University of Oslo)

**How difficult is it to make a friend with a local person in a small post-communist country? Experiences of the friendship-making process by the international students at Vilnius University, Lithuania**

Ivan Trunov (Vilnius University)

**Chinese Sojourners' Social Network during Study Abroad: an Ecological Perspective**

Yuyao Xiao (University College Cork)

**Migration for Their Future: Indonesian Student Abroad Story**

Inayah Hidayati (Research Center for Population, National Research and Innovation Agency – BRIN)

**Becoming a digital citizen in Estonia? International students' participation in host society**

Airi-Alina Allaste (Tallinn University)



# SPEAKERS & CHAIRS | Who's who

16:30 - 17:00 | Poster session

**What role does marketing play in internationalization of higher education? Results from a global institutional survey**

Anita Kéri (University of Szeged & Tilburg University) & Giorgio Marinoni (International Association of Universities)

**Mobility Scoreboard: Monitoring the conditions for learning mobility in higher education**

Emmanuel Sigalas (European Education and Culture Executive Agency)

**Brazilian Undergraduate Students and International Mobility: An Assessment of the Impact of Study Abroad and Academic Performance**

Rogério Ferraz dos Santos (ESPM), Fernando Luís Abegão Neto (ESPM), Vivian Iara Strehlau (ESPM) & Cristina Helena Pinto de Melo (ESPM)

**How do UK universities prepare for potential funding loss from international student tuition fees? Preliminary findings from two institutional case studies**

Georgiana Mihut (University of Warwick), Joana Almeida (University of Warwick), Zhe Chen (University of Warwick), Hongzhi Zhang (Monash University), Philip Wing Keung Chan (Monash University)

**Ukrainian university students in Slovakia: Explaining student mobility before and during the war**

Michaela Pilová (Slovak Academy of Sciences) & Miloslav Bahna (Slovak Academy of Sciences)

**Multiple Competitions and Social Values as Facilitators of Virtual Internationalization – Evidence from German Higher Education**

Jana Berg (German Centre for Higher Education Research and Science Studies) & Luzia Ferreira Santos (German Centre for Higher Education Research and Science Studies)







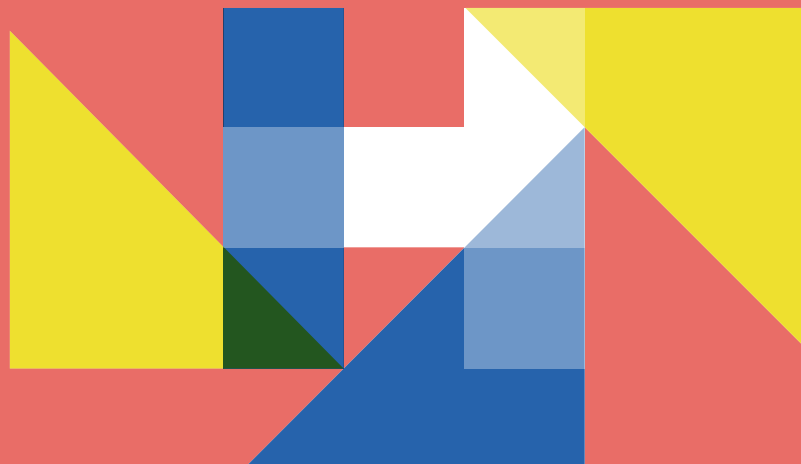
European Network on International Student Mobility  
Connecting Research and Practice

**15 | may**

**wednesday**

**day 3**  
**Conference  
programme**

Join us online **here** ►



# day 3 schedule

15 | may

## BUSINESS AND TECHNOLOGY UNIVERSITY | Central Event Room

**10:00-11:30**

Workshop on publishing on international student mobility  
Fiona Hunter (Catholic University of the Sacred Heart | Editor of the Journal of Studies in International Education) and Elspeth Jones (Leeds Beckett University | Editor of the Routledge Internationalization in Higher Education book series)

**14:30-18:00****WG sessions**

Open to all ENIS WG members

**WG1** | Central Event Room**WG2** | Meeting Room 210 - 2<sup>nd</sup> Floor**WG3** | Event Room - 4<sup>th</sup> Floor**WG4** | Meeting Room - 5<sup>th</sup> Floor (Webster University Campus at BTU)**WG5** | Room 303 - 3<sup>rd</sup> Floor**11:30-12:00****Coffee break****12:00-13:00****Closure keynote**

Emanuelle Gardan (Coimbra Group)

**13:00-13:30****Closing remarks**

Nicolai Netz (ENIS Vice-Chair | DZHW) &amp; Christof Van Mol (ENIS Chair | Tilburg University)

**13:30-14:30****Lunch break**

BTU yard

day 3

15 | may

## SPEAKERS & CHAIRS | Who's who



**10:00 – 11:30 | Workshop**

Publishing on international student mobility

**Fiona Hunter (Catholic University of the Sacred Heart | Editor of the Journal of Studies in International Education) and Elspeth Jones (Leeds Beckett University | Editor of the Routledge Internationalization in Higher Education book series)**



**12:00 – 13:00 | Closure keynote**

TBA

**Emanuelle Gardan (Coimbra Group)**



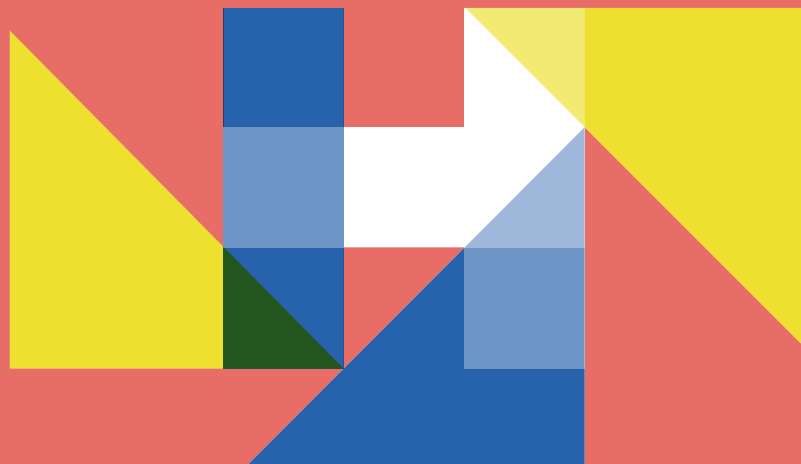


European Network on International Student Mobility  
Connecting Research and Practice

**Tbilisi**

**Georgia**

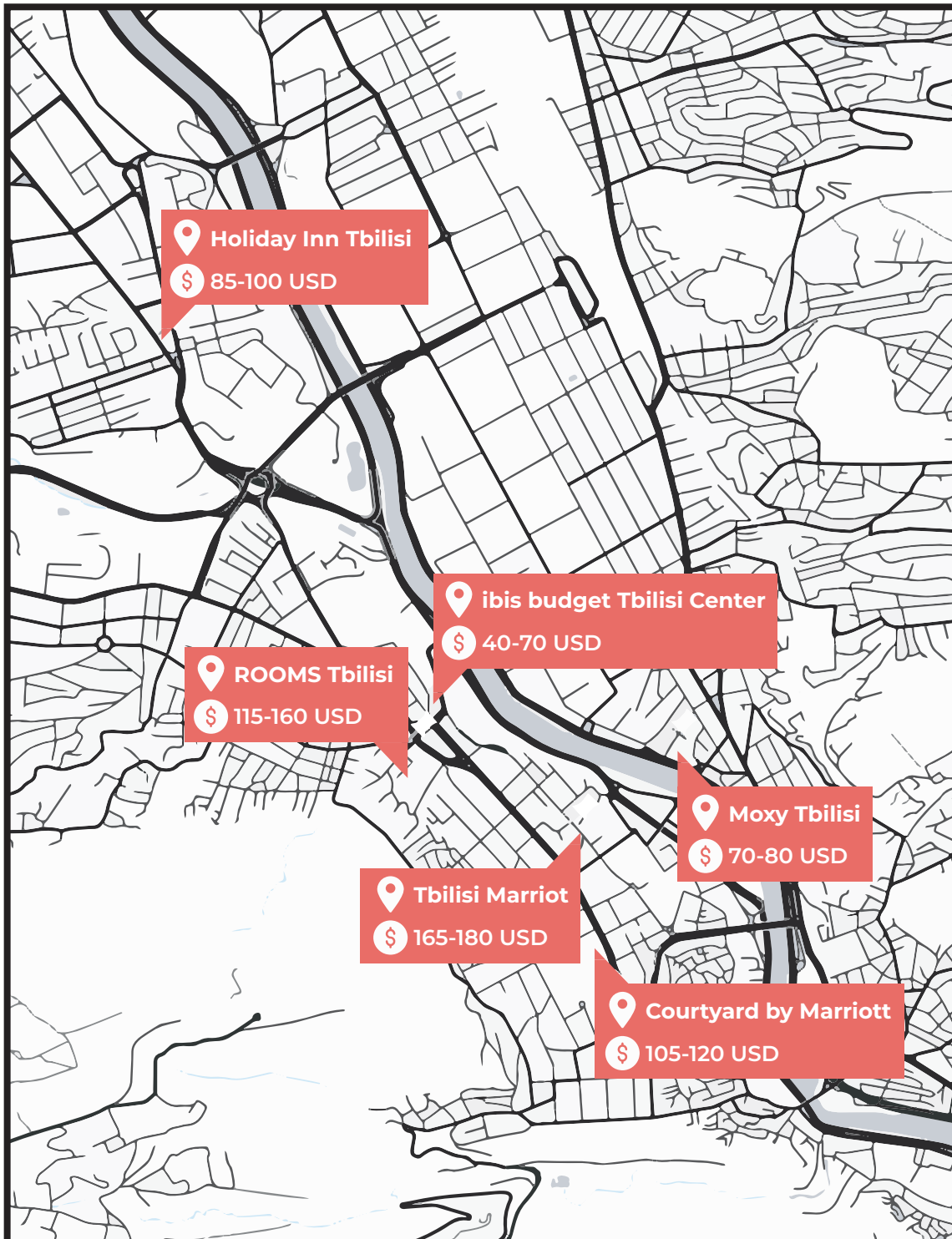
**Hotels**  
Accommodation  
suggestions



# where to stay

## HOTELS | Prices & Location

Click on your hotel to get more info



## Acknowledgments

**We would like to thank the following people (in random order) for their support in the organization of the conference:**

Ani Chelishvili  
Tamar Lominadze  
Wim Gabriels  
Merve Zayim Kurtay  
Denada Lica  
Pawel Bryla  
Eero Loonurm  
Daniel Klasik  
Rúna V. Guðmarsdóttir  
Judith Borràs  
Metem Sipahioglu  
John Cullinan  
Georgina Kasza  
Neslihan Onder-Ozdemir  
Joyce Aguiar  
Mette Ginnerkov-Dahlberg  
Antonina Levatino  
Annette Kratz  
Martin Howard  
Elina Apsite-Berrina  
Jannecke Wiers-Jenssen  
Donal Palcic  
Darragh Flannery  
Betul Sahin  
Emre Guvendir  
Kutay Uzun  
Alexander Seal  
Anu Harkonen  
Soren Carlson  
Per Nilsson  
Cristina Sin  
Zeynep Köylü  
Yakup Öz



European Network on International Student Mobility  
Connecting Research and Practice



# Want to join the ENIS Network?

Submit your application here

## Follow us



@ENISnetwork



ENIS Cost Action



ENIS Network



Funded by  
the European Union

[www.enisnetwork.com](http://www.enisnetwork.com)



[www.cost.eu](http://www.cost.eu)