

ENIS

European Network on International Student Mobility
Connecting Research and Practice

04-06 | jun | 2025

Iasi | Romania

3rd

ENIS
Conference
programme



European Network on International Student Mobility
Connecting Research and Practice

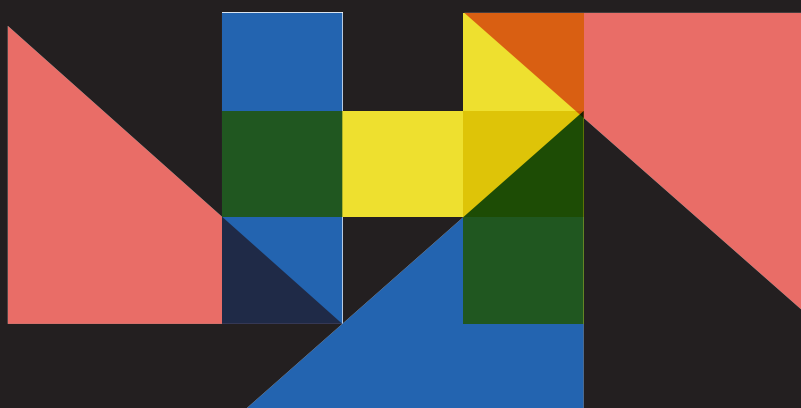
lasi

04-06 | jun

Join
us!

Click here to register online

Deadline: 13 | apr | 2025





European Network on International Student Mobility
Connecting Research and Practice

03 | jun

tuesday

day 0

**Pre-conference
activities**



day 0 schedule



17:00
City tour



19:00
Welcome reception
(eventually including food, TBD by
local organizers)



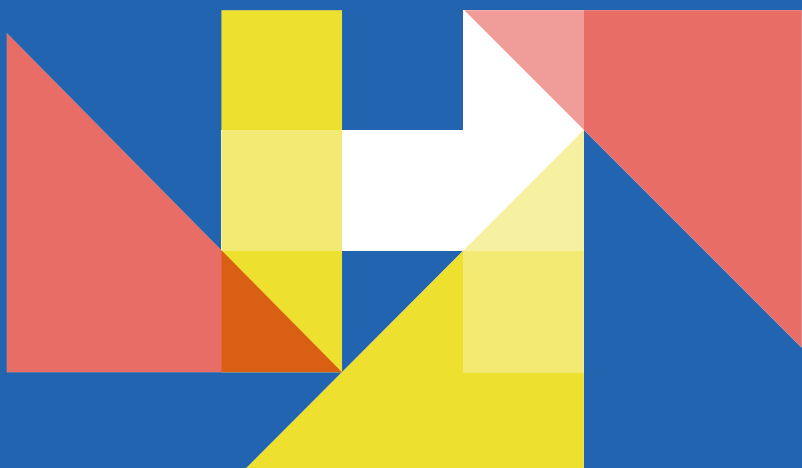
European Network on International Student Mobility
Connecting Research and Practice

04 | jun

wednesday

day 1
**Conference
programme**

Join us online **here** ►



day 1 schedule



08:45-09:30
Registration



09:30-10:05
Opening of 3rd ENIS Conference
Christof Van Mol (Tilburg University | ENIS Chair) & Nicolai Netz (German Centre for Higher Education Research and Science Studies)



10:05-10:25
Welcome address
Viorel Barbu (President of the Romanian Academy, Iași Branch) & Liviu-George Maha, Rector of „Alexandru Ioan Cuza” University of Iași



10:25-10:45
ENIS Awards
Judith Borràs (Universitat de Lleida)



10:45-11:30
Opening lecture
The Future of International Student Mobility
Ligia Deca (Vice-Rector of the National School of Political and Administrative Studies, Bucharest)



11:35-12:00
Coffee break



12:00-13:00
Spotlight session | The impact of ENIS
Sevgi Kaya-Kasikci (Middle East Technical University), Eero Loonurm (Youth Board of Estonia) & Luca Alexa Erdei (Eötvös Loránd University)



13:00-14:30
Lunch break

TBA



14:30-16:00
Session 1.1 | TBA
Global ISM flows and trends at the macro-level
Session 1.2 | TBA
Social and cultural integration of students

Session 1.3 | TBA
Digital mobilities

Session 1.4 (15:00-16:00) | TBA
Enhancing International Student Mobility and Labour Market Integration: Policy Insights for Graduate Retention



16:00-16:30
Coffee break

day 1 schedule



TBA



16:30-18:00

Session 2.1 | TBA

Social Inequalities

Session 2.2 | TBA

Survival mobility: Challenges and
Prospects for HE

Session 2.3 | TBA

The impact of international
student mobility

Session 2.4 | TBA

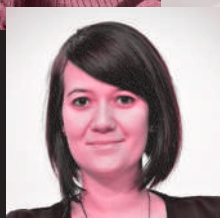
Experiences of international
students

SPEAKERS & CHAIRS | Who's who



10:45 - 11:30 | Opening keynote lecture
The Future of International Student Mobility

Ligia Deca (National School of Political and Administrative Studies, Bucharest)



12:00 – 13:00 | Spotlight session | The impact of ENIS

Host: Sevgi Kaya-Kasikci | Middle East Technical University, Eero Loonurm | Youth Board of Estonia & Luca Alexa Erdei | Eötvös Loránd University

Participants: Cosmin Nada | ISCTE-IUL, Betul Bulut-Sahin | TED Technical University, Ani Chelisvili | Business and Technology University & Ying Yang | Education University of Hong Kong



14:30 – 16:00 | Session 1.1 | Session of WG1 (Global ISM flows and trends at the macro-level)

Chairs: Giorgio Marinoni | International Association of Universities, Queenie Lam | Y-Europe Consulting & Guest speaker (TBC)



SPEAKERS & CHAIRS | Who's who



14:30 - 16:00 | Session 1.2 | Social and cultural integration of students trends at the macro-level)

Chairs: Zeynep Köylü (University of Basel) & Betül Bulut Şahin (Middle East Technical University)

Introduction to "GLOCALSA": A project dedicated to the development of international students' glocal competences through a smartphone application

Judith Borrás (University of Lleida), Josep M. Cots (University of Lleida), Anca Frumuselu (University of Lleida), Toni Granollers (University of Lleida), Àngels Llanes (University of Lleida), Thaïs Mena (University of Lleida), Glòria Vázquez (University of Lleida), Lidia Gallego-Balsà (University of Rovira i Virgili), Sonia Mas (Universitat Autònoma de Barcelona)

Unpacking Social Network Dynamics of Chinese Sojourners in Ireland: An Ecological Perspective on Group and Individual Experiences

Yuyao Xiao (University College Cork, Ireland)

The impact of year-long language study abroad on plurilingual and pluricultural identity development in L1 English speakers

Emma Riordan & Anne Marie Devlin (University College Cork)



14:30 - 16:00 | Session 1.3 | Digital mobilities

Chair: Nicolai Netz (DZHW - German Centre for Higher Education Research and Science Studies)

Bridging the Gap: Connecting Research and Practice in Enhancing International Student Mobility through Digital Platform

Prof. Dr. Mirela Imširović (University of Sarajvo)

Unraveling the Factors Predicting Students' Virtual Mobility Intentions in Turkish Higher Education

Dr. Merve Zayim-Kurtay (Middle East Technical University), Dr. Sevgi Kaya-Kasikci (Independent Researcher), Prof. Dr. Yasar Kondakci (Middle East Technical University)

From Campus to Cloud: Rethinking Social and Cultural Integration in the Digital Era of International Student Mobility

Esma Şenel (Izmir Democracy University) & Zahide Erdoğan (Ankara Hacı Bayram Veli University)



SPEAKERS & CHAIRS | Who's who



15:00 - 16:00 | Session 1.4 | Enhancing International Student mobility and Labour Market Integration: Policy Insights for Graduate Retention

Chairs: Cristina Fit (Executive Agency for Higher Education, Research, Development and Innovation Funding (UEFISCDI), Adriana Perez-Encinas (Universidad Autónoma de Madrid) & Wim Gabriels (Erasmus Student Network)



16:30 - 18:00 | Session 2.1 | Social Inequalities

Chairs: Daniel Klasik (University of North Carolina at Chapel Hill)

Enhancing Diversity & Inclusion in Erasmus+ Student Mobility: Insights from the Erasmus Student Network
Wim Gabriels (Erasmus Student Network)

Unpacking Inequality in Access to International Student Mobility Using the Multi-Level Ecological Model: A Review of Literature Based on Conceptual Papers

Mariia Tishenina (Edge Hill University), Sahizer Samuk (BI Norwegian Business School), Sylvie Lomer (University of Manchester), Irma Budginaite-Mackine (Vilniaus Universitetas), Zahide Erdogan (Ankara Hacı Bayram Veli University), Laura Dryjanska (Cardinal Stefan Wyszyński University in Warsaw), Leticja Gusio (Universiteti I Tiranes), Thais Franca (ISCTE-IUL), Annette Kratz (UUK), Cosmin Nada (ISCTE-IU), Orlanda Tavares (University of Minho), Sören Carlson (Europa-Universität Flensburg), Suvi Jokila (University of Turku), Aline Courtois (University of Bath)

International scholarship opportunities and the leave no one behind agenda of the Sustainable Development Goals

Annabel Boud (Commonwealth Scholarship Commission in the UK)



SPEAKERS & CHAIRS | Who's who



16:30 - 18:00 | Session 2.2 | Survival mobility: Challenges and Prospects for HE

Discussant: Giorgio Marinoni (International Association of Universities)

Moderator: Sanam Roohi (Kulturwissenschaftliches Institut)

Survival Mobility in Portuguese Higher Education: Addressing Challenges for Displaced Students

Cosmin Nada (ISCTE-IUL)

On the run: Escaping inhospitable conditions in one's home country through the means of foreign education

Mette Ginnerskov-Dahlberg (Uppsala University)

A Meta-synthesis of Forcibly Displaced Migrants' Experiences in Turkish Higher Education through Capabilities Framework

Yasar Kondakci, Merve Zayim-Kurtay and Sevgi Kaya (Middle East Technical University)

16:30 - 18:00 | Session 2.3 | The impact of international student mobility

Chairs: Jannecke Wiers-Jenssen | NIFU & John Cullinan | NUI Galway

Exploring the Effects of Internationalization on International Student Success in Romanian Bachelor Programs: a case study (2016-2022)

Cristina Fit (Executive Agency for Higher Education, Research, Development and Innovation Funding (UEFISCDI); National University of Political and Administrative Studies (SNSPA))

Exploring the Impact of International Student Mobility on Job Satisfaction

Vegard Wiborg (Nordic Institute for Studies of Innovation, Research and Education), Tora Knutsen (Nordic Institute for Studies of Innovation, Research and Education) & Jannecke Wiers-Jenssen (Nordic Institute for Studies of Innovation, Research and Education)

From International Education to International Academia

Tugay Durak (University College London)



SPEAKERS & CHAIRS | Who's who



16:30 - 18:00 | Session 2.4 | Experiences of international students

Chair: Annarita Magliacane | University of Liverpool

International Students' Experiences in China's English-Medium Instruction Programs: Precarity and Resilience

Nannan Lu (Nanyang Technological University - National Institute of Education, Singapore)

Intercultural competence and soft skills development through study abroad: The case of Spanish and Turkish students

Betül Bulut Şahin (Middle East Technical University), Judith Borràs (University of Lleida), Zeynep Köylü (University of Basel) & Sahizer Samuk (Norwegian Business School Oslo)

The Role of Cultural Adaptation in Enhancing Career Development through International Student Mobility

Yasemin Tutar (Recep Tayyip Erdoğan University)





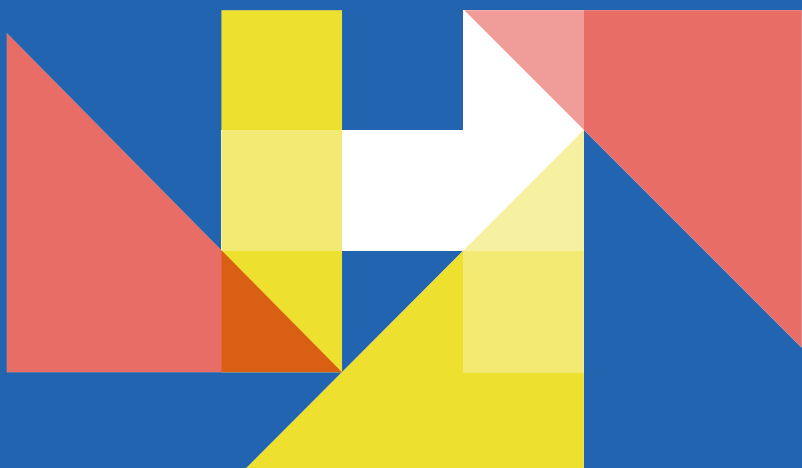
European Network on International Student Mobility
Connecting Research and Practice

05 | jun

thursday

day 2
**Conference
programme**

Join us online **here** ►



day 2 schedule



TBA



09:45-10:45

Workshop | How to maintain ISM flows in an economic-sustainable way in a changing political climate? – Vent, share and solve | TBA

Adriana Perez-Encinas (Autonomous University Madrid), Emrys Gerritse (OsloMet – Oslo Metropolitan University'), Gregor Schäfer (University of Copenhagen) & Grace Cleary (Gies College of Business)



10:45-11:30

Fostering new collaborations | ENIS researcher-practitioner Short Term Scientific Missions and mentoring grants

Eero Loonurm (Estonian Education and Youth Board), Elina Apsite-Berina (University of Latvia), Cristina Sin (Universidade Lusófona) & Eleonora Erittu (Universita Di Bologna)



11:30-12:00

Coffee break



12:00-13:30

Session 3.1 | TBA

Negotiating multiple responsibilities: parenthood and international student mobility

Session 3.2 | TBA

Determinants of ISM

Session 3.3 | TBA

The role of staff and institutions in shaping international experiences

Session 3.4 (15:00-16:00) | TBA

Employability of international students in the host country. Where to start? How to bring together practice and research?



13:30-14:30

Lunch break



TBA



14:30-14:40

Pitch of poster presentations

TBA



14:30-16:00

Plenary session of WG5 | TBA

Discussing international student mobility in a changing societal landscape: perspectives of researchers, practitioners and policymakers



16:00-16:30

Coffee break

day 2 schedule



TBA



16:30-17:00

Poster session



TBA



17:00-18:00

World Café session | Roundtable discussions with researchers and practitioners on any scientific and/or practical questions that you bring to the table



TBA



19:30

Joint dinner



TBA

SPEAKERS & CHAIRS | Who's who



09:45 - 10:45 | Workshop

How to maintain ISM flows in an economic-sustainable way in a changing political climate? – Vent, share and solve

Adriana Perez-Encinas | Autonomous University Madrid,
Emrys Gerritse | OsloMet – Oslo Metropolitan University,
Gregor Schäfer | University of Copenhagen & Grace
Cleary | Gies College of Business



10:45 – 11:30 | Fostering new collaborations | ENIS researcher-practitioner Short Term Scientific Missions and mentoring grants

Eero Loonurm | Estonian Education and Youth Board,
Elina Apsite-Berina | University of Latvia, **Cristina Sin** |
Universidade Lusófona & **Eleonora Erittu** | **Universita Di
Bologna**



SPEAKERS & CHAIRS | Who's who



12:00 – 13:30 | Session 3.1 | Negotiating multiple responsibilities: parenthood and international student mobility

Chair: Christof Van Mol (Tilburg University)

Academic mobility and the family

Maggi Leung (University of Amsterdam)

'We can't get Padron because our Landlord refuses to supply us with statutory paperwork'; Glitz, Glitches and Glamour of being an International Postgraduate West African student parents in Spain higher education

Umoh Adetola Elizabeth (University of Autonomou Barcelona)

Exploring the effects of parenting on participation in Erasmus+ student mobility

Rúna Guðmarsdóttir (Rannís and Tilburg University)



12:00 – 13:30 | Session 3.2 | Determinants of ISM

Chair: Yasar Kondakci (Middle East Technical University) and Queenie Lam (Y-Europe)

Advancing Forecasting Methods for International Student Applications: A Comparative Analysis and Scenario Exploration

Ruth Neville (University of Liverpool), Francisco Rowe (University of Liverpool) & Emilio Zagheni (Max Planck Institute for Demography)

Exploring the GAP: Understanding the Micro-, Meso-, and Macro-level Factors Influencing Outbound Short-term Student Mobility

Luca Alexa Erdei (Eötvös Loránd University), Georgina Kasza (Tempus Public Foundation)



Bridging Divides or Widening Gaps? The Dual Role of Vietnamese Educational Agents in Reproducing and Disrupting Social Inequalities in Access to International Education

Trang Thu Nguyen (University of Liverpool)



SPEAKERS & CHAIRS | Who's who



12:00 – 13:30 | Session 3.3 | The role of staff and institutions in shaping international experiences

Chair: Catherine Montgomery (Durham University)

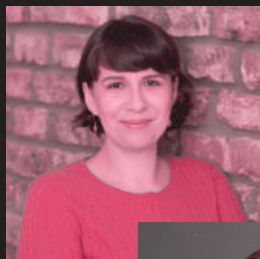
The Third Space Environments for Internationalization and Identities of International Office Professionals in Higher Education

Seda Okur (Ankara Music and Fine Arts University), Serap Emil (Middle East Technical University) & Betül Bulut Şahin (TED University)

Understanding Employability Experiences of International Students in UK Universities

Lindsay Nygren (University of Glasgow)

Social inequalities, gender and international student mobility: Exploring the minoritized voices of international female students



12:00 – 13:30 | Session 3.4

Chairs: Emilia Kmiotek-Meier (University of Cologne), Katharina Daun (University of Cologne)

Employability of international students in the host country. Where to start? How to bring together practice and research?



16:30 – 17:00 | Poster session

Student Perspectives on Internationalisation and Mobility within the EHEA

Arno Schrooyen (European Students' Union)

Social and Cultural Integration of Albanian International Students: Challenges and Opportunities in Host Countries

Denada Lica (Aleksander Moisiu University of Durrës)

Reflections on the ENIS Virtual Summer Schools: Insights and Opportunities for the 3rd Edition

Judith Borràs (Universitat de Lleida); Dangení (Newcastle University); Ani Chelishvili (Business and Technology University) & Ying Yang (Education University of Hong Kong)

Advancing Internationalization at Home: Key Findings and Outputs from the EPOS Project

María Victoria Soulé (University of Cyprus)

Empowering International Office Staff: A Comparative Study on Intercultural Competence at Turkish and UK Universities

Seda Okur (Ankara Music and Fine Arts University), Dangení (Newcastle University)



SPEAKERS & CHAIRS | Who's who

16:30 – 17:00 | Poster session

Taking the Pulse: A Practitioner Approach to Social and Cultural Integration Initiatives for International Students at a Large U.S. Research University

Tracy Waldman (Rutgers, The State University of New Jersey) & Megan Francis (Rutgers, the State University of New Jersey) & Oi Yin Lo (Rutgers, the State University of New Jersey)

Understanding Social Integration of Chinese Students in the Netherlands: The Role of Friendships

Lina Jiang, University of Amsterdam

Capturing and Interpreting Student Agency in Access to International Higher Education: A Study of Chinese Agent-user Students' University Application Experiences

Ying Yang (University of Manchester) & Christof Van Mol (Tilburg University)

Mobility of West African International PhD students, Job Market and Work Transition in South Africa

Uwem Samuel (University of Hradeklove), Umoh Adetola Elizabeth (Autonomous University Barcelona) & Gbemi Gbadebo Oyewo (Independent Researcher)

Towards a desirable life. Imaginaries and Experiences of International Student Mobility to Italy

Francesca Morra (Politecnico di Torino), Silvia Aru (University of Turin) & Ilaria Eloisa Lesmo (University of Turin)

Inequality in study abroad participation. Evidence from pre-and post-Brexit UK

Georgiana Mihut (University of Warwick)

Balancing Policy and Equity: Political Approaches to Refugees' Access to Higher Education

Zahide Erdoğan (Ankara Hacı Bayram Veli University)

Linguistic proximity and international migration of students from Ukraine to Europe

Michaela Pilova (Slovak Academy of Sciences) and Miloslav Bahna (Slovak Academy of Sciences)

Institutional Agents' Concepts of Support for Integration of International Degree Students into Finnish Host Communities

Anduena Ballo (University of Jyväskylä), Sotiria Varis (University of Jyväskylä) & Päivi Tynjälä (University of Jyväskylä)

How Can Volunteering be a Pathway to Integration? A Qualitative Study on International Students

Giovanni Aresi (Università Cattolica del Sacro Cuore & CERISVICO); Maura Pozzi (Università Cattolica del Sacro Cuore & CERISVICO); Anastasija Sojic (Università Cattolica del Sacro Cuore); Iwona Nowakowska (The Maria Grzegorzewska University); Amanda C. Murphy (Università Cattolica del Sacro Cuore) & Elena Marta (Università Cattolica del Sacro Cuore & CERISVICO)

Parenting abroad: Addressing the challenges and support needs of families on international mobility

Sejdi Sejdiu (University "Ukshin Hoti" Prizren) & Rezarta Ramadani (University "Ukshin Hoti" Prizren)

Exploring the relationship between career choices and mobility experience of International Mobility Students

Prasun Sharma (Eötvös Loránd University)



SPEAKERS & CHAIRS | Who's who

17:00 - 18:00 | World Café Session

The world café session consists of roundtable discussions on any ISM-topic conference participants would like to bring to the table, related to the general topic of the table. The questions / issues can be practical or scientific. The following five table topics are available:

Global ISM flows and trends | Discussion leader: Yasar Kondakci (Middle East Technical University) & Queenie Lam (Y-Europe)

Social inequalities in access to and during ISM | Discussion leader: Sanam Roohi (Kulturwissenschaftliches Institut) & Rúna Guðmarsdóttir (Rannís)

The social and cultural integration of international students | Discussion leaders: Zeynep Köylü (University of Basel) & Betül Bulut Şahin (Middle East Technical University)

Outcomes of ISM | Discussion leaders: Jannecke Wiers-Jenssen (NIFU) & John Cullinan (NUI Galway)

Connecting Research and Practice | Discussion leaders: Giorgio Marinoni (International Association of Universities) & Cosmin Nada (ISCTE-IUL)





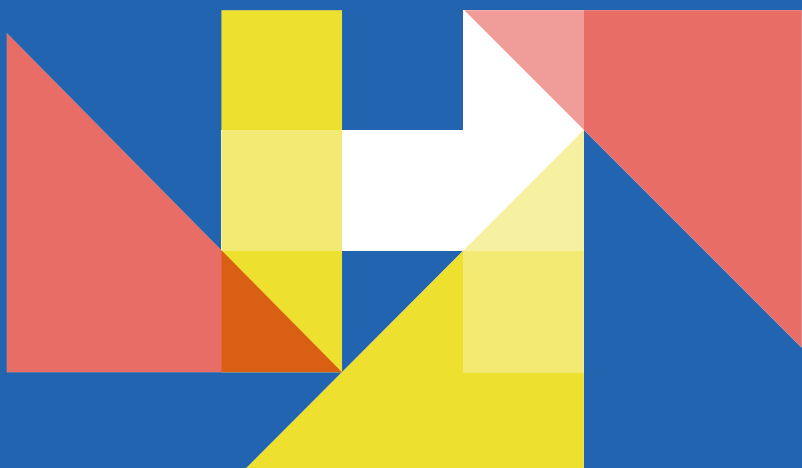
European Network on International Student Mobility
Connecting Research and Practice

06 | jun

friday

day 3
**Conference
programme**

Join us online **here** ►



day 3 schedule



TBA



09:00-10:00

Workshop | Campfire

Conversations: Equal Access to International Mobility—Breaking Barriers, Building Bridges | TBA

Leila Benabdallah (OCEANS network)



10:15-11:45

Plenary session on general thematic reviews | TBA

Cristina Sin (Lusophone University), Sylvie Lomer (University of Manchester), Kutay Uzun (Trakya University), Georgiana Mihut (Warwick University), Anita Keri (Tilburg University & Merve Zayim-Kurtay (Middle East Technical University)



11:45-12:15

Coffee break



12:15-13:00

Closure keynote

Catherine Montgomery (Durham University)



13:00-13:30

The future of ENIS

Nicolai Netz (ENIS Vice-Chair | DZHW) & Christof Van Mol (ENIS Chair | Tilburg University)



13:30-14:30

Lunch break



TBC



14:30-15:00

1st ENIS Council Meetin

Open to all ENIS Members



15:00-16:00

WG sessions

Open to all ENIS WG Members



WG1 | TBA

WG2 | TBC

WG3 | TBA

WG4 | TBC

WG5 | TBA



16:30

Social Event



TBA

SPEAKERS & CHAIRS | Who's who



09:00-10:00 | Workshop | Campfire Conversations: Equal Access to International Mobility—Breaking Barriers, Building Bridges

Chairs: Anezka Aubrechtova & Aleksandra Dumitrescu | OCEANS network, & Gev Harutyunyan | GaragErasmus



12:15 – 13:00 | Closure keynote

The dynamics of cross-border academic mobility and immobility: what does the future hold?

Catherine Montgomery | Durham University

International academic mobility is influenced by its social, political and cultural environments and globally we are experiencing an era of extreme uncertainty, or what Stein (2021) characterises as the volatility, unpredictability, complexity and ambiguity of contemporary societies. Current fragile global relations are intensifying the precarity of international research and educational collaborations, for instance between China and the US (Postiglione, 2021) and across Europe (Courtois and Sautier, 2022). This presentation explores cross-border academic mobility in this increasingly complex context, and also suggests that forced mobility and academic immobilities should be considered part of the mobilities picture of globalised higher education (Courtois et al, forthcoming). Mobility as part of internationalisation encompasses immobilities and alongside forced migrations due to political persecution and war, there are asymmetries in resources for higher education and previously colonised contexts continue to experience epistemic injustices (Marginson and Xu, 2023; Montgomery and Trahar, 2023). For some mobile students and scholars, particularly those from the global south, challenges in crossing borders are increasing as 'power-geometries' (Massey 1999, p. 28) between nations intensify. Courtois et al (forthcoming) note that: 'All of this suggests that the vast workings of mobilities, that propel students and scholars to move across geographic borders, co-exist with immobilities, borders and enclosures.' This presentation will consider some of these tensions and contradictions and their potential impact on the future of student mobility. The presentation will also reflect on the themes and ideas raised in a selection of papers from this conference.





European Network on International Student Mobility
Connecting Research and Practice

IASI

Romania

useful
information



How to get

FROM THE IAȘI AIRPORT TO YOUR HOTEL



Our recommendation Uber or Bolt

- You can book your trip in advance, but our recommendation is to order it after you pick up your luggage;
- Estimated price – 7-10 euros, one way to city center, depending on demand;
- Ride duration to the city center: 15-20 minutes, depending on traffic conditions;
- Pick-up spot: parking place, arrivals terminal.



Alternative option Express bus

To travel from the airport to the city center by Express Bus 50, the route includes the following stops: Airport, Str. Moara de Vânt (optional), Târgu Cucu, **Piața Unirii [Unirii Square] (the closest station to the conference venues)**, and Gara [Train Station].

Buses run non-stop, departing every 30 minutes from both the Airport and the Train Station. You can check the exact timetable [here](#).

Tickets for one and two journeys can be used on bus 50 at the price of 3,50 lei, respectively 7 lei. The ticket for one trip can be purchased from the driver (after validation in bus 50, it can be used for 120 minutes, for as many trips as you wish, on any route in the urban area).

Tickets can also be purchased through the mobile application 24 Pay (available in Play Store and App Store), which you can use in English or Romanian, as well as from the ticket machine in the Airport station.

How to get



CONFERENCE VENUES



The University House (main location) **(in Romanian: Casa Universitarilor)**

Address: Bulevardul Carol I 9, Iași 700506



Romanian Academy, Iași Branch (secondary location) **(in Romanian: Academia Română, Filiala Iași)**

Address: Bulevardul Carol I 9, Iași 700506



Main building

Entrance (from the General Henri Mathias Berthelot Street)



How to get



CONFERENCE VENUES

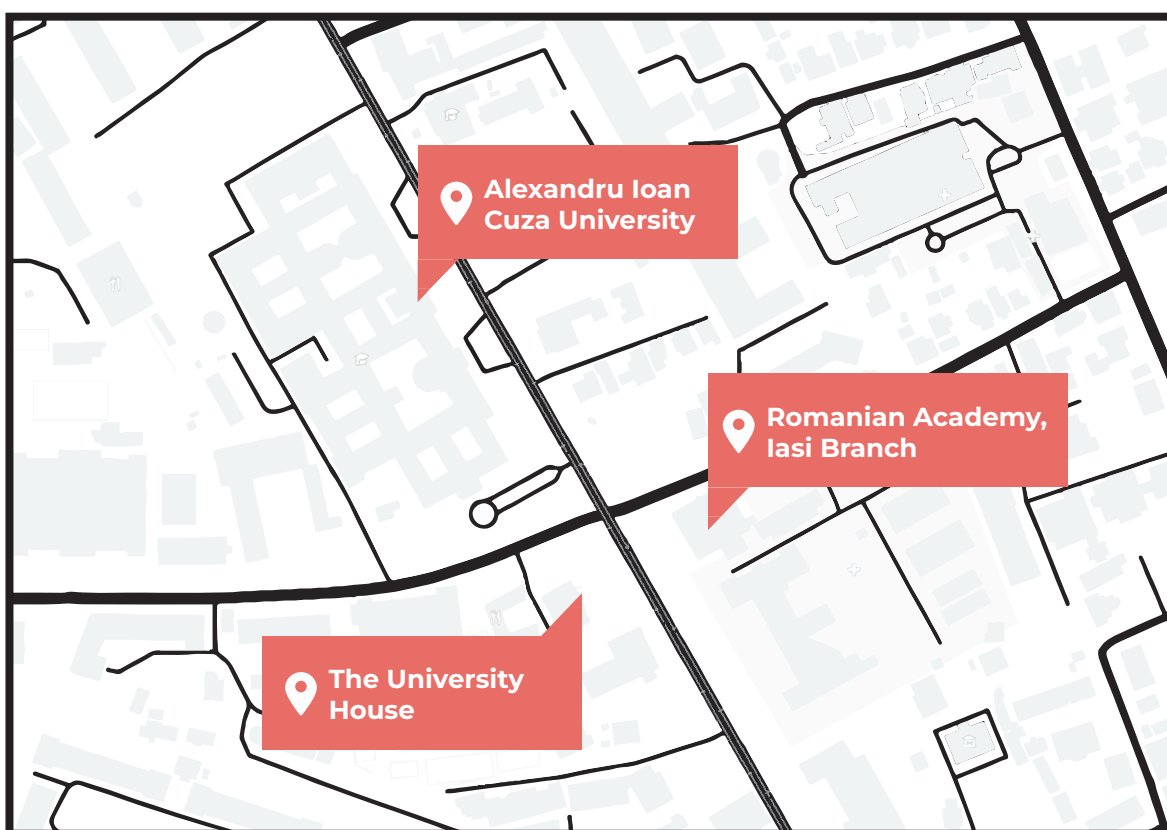


Alexandru Ioan Cuza University (in Romanian: Universitatea "Alexandru Ioan Cuza" din Iasi)

Address: Bulevardul Carol I 11, Iași 700506



Locations on map:



More info



Useful links:

<https://www.turism-iasi.ro/en/home-en/>

<https://iasi.travel/en/>

<https://romaniatourism.com/iasi.html>



Passport and Visa Information:

Information on visa requirements for entering Romania can be found on the website of the Ministry of Foreign Affairs.

Please check this [link](#) for more information.



Currency

Romanian Leu (pl. Lei) (currency code, RON).

Exchange rates as of December 4th:

1 euro = 4.9770 lei

1 US dollar = 4.7393 lei

Please check this [link](#) for updated information.



Electricity

The standard electric outlet voltage in Romania is 230 volts at a frequency of 50 Hz and the power sockets are F (schuko plug). Participants are expected to have their own adaptor if required and/or any charger (mobile phone, personal laptop etc.).



Time zone

Current local time is GMT+3.



Emergency Calls

In case of emergency, please dial the EU emergency number 112 for Police, Ambulance or Fire Services.



Medical Services

All participants will be responsible for payment of any medical, surgical, dental, hospital or ambulance services that they require.



Local services

Cash machines for major banks operating in Romania are available in the proximity. Several pharmacies are available nearby the bank.

where to stay

HOTELS | Location & distance from conference venues

Click on each hotel to get more info



Contact info



Emergency contact persons

Contact persons:

Alina Botezat | Mobile +40 751 923 254

Iolanda Voda | Mobile +40 723 134 636



Whatsapp

ENIS Iași Whatsapp group:

We invite all conference participants to stay informed and connected by joining our official conference WhatsApp group. Simply scan the QR code below to access important updates, announcements, and engage with fellow attendees.



Working Groups

WG1 | Global ISM flows and trends at the macro level

WG2 | Social inequalities in access to and during ISM

WG3 | The social and cultural integration of international students in their host countries

WG4 | The impact of ISM on graduates' careers

WG5 | Connecting research and practice

Acknowledgments

We would like to thank the following people (in alphabetic order) for their support in the organization of the conference:

Adriana Perez-Encinas (Autonomous University Madrid, Spain)
Alina Botezat (Academia Romana Filiala Iasi, Romania)
Ana Iolanda Voda (Alexandru Ioan Cuza University of Iasi, Romania)
Ani Chelishvili (Business and Technology University, Georgia)
Annarita Magliacane (The University Of Liverpool, United Kingdom)
Anne Marie Devlin (University College Cork, Ireland)
Bariş Eriçok (Ordu University, Turkey)
Burcu Koc (Sakarya University, Turkey)
Cecile Steyer (Nantes University, France)
Christof Van Mol (Tilburg University, the Netherlands)
Cristina Sin (Universidade Lusófona, Portugal)
Eero Loonurm (Estonian Education and Youth Board, Estonia)
Elena Ovchinnikova (Università Cattolica del Sacro Cuore, Italy)
Georgiana Mihut (University of Warwick, United Kingdom)
Jannecke Wiers-Jenssen (Nordic Institute for Studies in Innovation, Research and Education, Norway)
John Cullinan (National University of Ireland, Galway, Ireland)
Joyce Aguiar (Centre for Research in Higher Education Policies, Portugal)
Judith Borràs (Universitat de Lleida, Spain)
Lavinia Bejan (Romanian Academy, Iasi Branch)
Lutjona Lula (Qendra ESN AL, Albania)
Mar Cobeña (University of Seville, Spain)
Nannan Lu (Nanyang Technological University, Singapore)
Orlanda Tavares (University of Minho, Portugal)
Per Nilsson (Umeå universitet, Sweden)
Queenie Lam (Independent researcher, Germany)
Runa Gudmarsdottir (Rannís, Iceland)
Sejdi Sejdiu (University "Ukshin Hoti" Prizren, Kosovo)
Sevgi Kaya (Middle East Technical University, Turkey)
Si Huili (University of Manchester, United Kingdom)
Sintija Šmite-Tilika (State Education Development Agency, Latvia)
Sylvie Lomer (University of Manchester, United Kingdom)
Thais França (ISCTE – University Institute Lisbon, Portugal)
Yeşim Özer Özkan (Gaziantep University, Turkey)



European Network on International Student Mobility
Connecting Research and Practice

Want to join the ENIS Network?

[Submit your application here](#)

Follow us



@ENISnetwork



ENIS Cost Action



ENIS Network

This conference programme is based upon the work from COST Action 20115, supported by COST (European Cooperation in Science and Technology)



Funded by
the European Union

 **cost**
EUROPEAN COOPERATION
IN SCIENCE & TECHNOLOGY
www.cost.eu