

ENIS

European Network on International Student Mobility
Connecting Research and Practice

13-15 | may | 2024

Tbilisi | Georgia

2nd

ENIS

**Conference
programme**



European Network on International Student Mobility
Connecting Research and Practice

Tbilisi

13-15 | may

Join
us!

Click here to register online

Deadline: 1 | mar | 2024



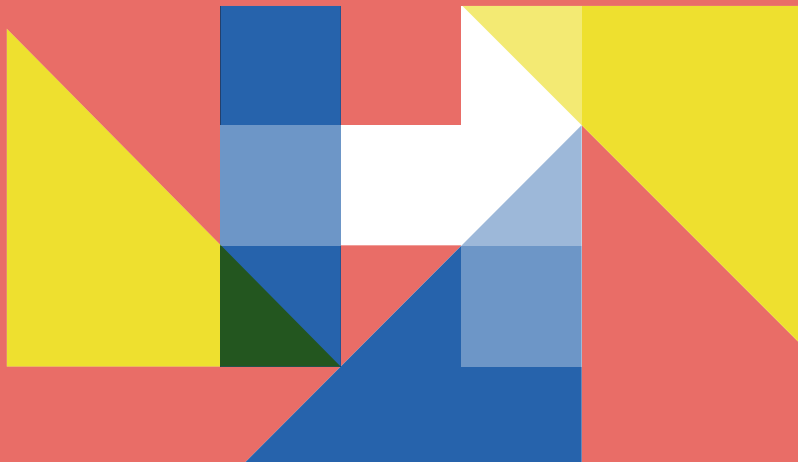


European Network on International Student Mobility
Connecting Research and Practice

12 | may

sunday

day 0
**Pre-conference
activities**



day 0 schedule

12 | may



LIBERTY SQUARE | in front of the Tbilisi City Assembly



17:00-19:00
Guided walking tour
with local ESN section



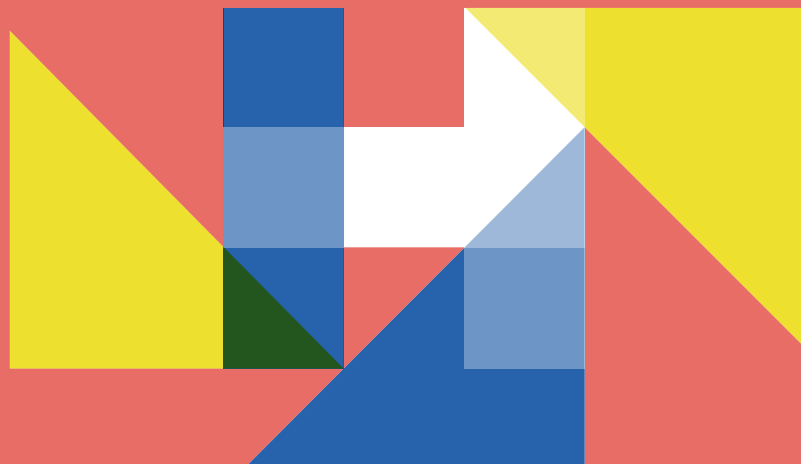
European Network on International Student Mobility
Connecting Research and Practice

13 | may

monday

day 1
**Conference
programme**

Join us online **here** ►



day 1 schedule

13 | may

THE NATIONAL PARLIAMENTARY LIBRARY OF GEORGIA



10:00-10:15

Opening of 2nd ENIS Conference

Christof Van Mol (Action Chair | Tilburg University) & Ani Chelisvili (Local organizer | Business and Technology University Tbilisi)



10:15-10:40

Welcome address

Dr. Giorgi Amilakhvari (Ministry of Education, Science, and Youth) and Prof. Dr. Nino Enukidze (Rector Business and Technology University)



10:45-11:30

Opening lecture

'Connecting Research and Practice in International Student Mobility: themes, challenges and shifting paradigms'
Hans de Wit (Boston College)



11:30-12:00

Coffee break



12:00-13:00

Spotlight session | Results from ENIS COST Action

Merve Zayim-Kurtay (Middle East Technical University), Rúna V. Guðmarsdóttir (Rannis), Eero Loonurm (Study in Estonia), Cristina Sin (Universidade Lusófona, Sanam Roohi (Institute for Advanced Studies in the Humanities (KWI)) & Zain Abdin (University of Eastern Finland)

ROOMS HOTEL TBILISI | Floor -1



13:20-14:30

Lunch break



14:30-16:00

Session 1.1 | Event Room

ISM determinants and trajectories

Session 1.2 | Master Room

Social inequalities in ISM

Session 1.3 | Central Room

What is the impact of digitalization on ISM at different levels, national and institutional? Opportunities and challenges



16:00-16:30

Coffee break



16:30-18:00

Session 2.1 | Event Room

Trends and experiences of ISM

Session 2.2 | Master Room

Social and cultural integration of students

Session 2.3 | Central Room

Contextualizing practices, challenges, and potentials of virtual internationalization for teaching, learning, and university collaborations

SPEAKERS & CHAIRS | Who's who



10:45 - 11:30 | Opening lecture

'Connecting Research and Practice in International Student Mobility: themes, challenges and shifting paradigms'

Hans de Wit (Boston College)

International student mobility continues to be the main component of internationalization of higher education, both in research and in practice. But what we mean by international student mobility is not always clearly defined in research and practice. And the same applies to its positioning in the broader study and policy on internationalisation. What are the key themes and challenges, and what may be the main shifting paradigms for the present and future of international student mobility and internationalisation in higher education.



14:30 – 16:00 | Session 1.1 | ISM determinants and trajectories

Chair: Elspeth Jones | Leeds Beckett University

Tracing life trajectories of overseas educated Chinese students: A network analysis of biographical data from 1847 to 1991

Damir Padieu (Trier University) and Queenie K.H. Lam (Y-Europe Consulting)

Better schools, better parties, better lives: Investigating the complex networks of credit and degree student mobility

Micol Matilde Morellini (University of Oxford) and Per Block (University of Zurich)

Developing innovative and participatory research designs: international students as participants and co-researchers

Vera Spangler (University of Surrey)



14:30 – 16:00 | Session 1.2 | Social inequalities in ISM

Chairs: Georgiana Mihut | University of Warwick & Irma Budginaite-Mackine | Vilnius University

Comparing mobilities: Strategies, lived experiences, and future dreams of international students

Mette Ginnerkov-Dahlberg (Uppsala University) & Karen Valentin (Aarhus University)

Pandemic, war and cumulative precarity: Geo-spatialized configurations of insecurity and resilience among South Asian students in a Finnish University Town

Zain Abdin (University of Eastern Finland) and Sanam Roohi (Institute for Advanced Studies in the Humanities)



Social Inequalities in International Student Mobilities: General Systematic Review Findings

Irma Budginaite-Mackine (Vilnius University) and Katharina Resch (University of Vienna)



SPEAKERS & CHAIRS | Who's who



14:30 – 16:00 | Session 1.3 | Practitioners speaking: What is the impact of digitalization on ISM at different levels, national and institutional? Opportunities and challenges

Chair: Adriana Perez-Encinas | Autonomous University Madrid

Speakers: Emrys Gerritse (Oslo Metropolitan University), Cristina Fit (Executive Agency for Higher Education, Research, Development and Innovation Funding) & Anne-Sophie Hokkannen (Finnish National Agency for Education)

This session takes the opportunity of bringing in new ISM experts voices into the picture to discuss on impact of digitalization on ISM at different levels and from different perspectives. A set of short presentations will identify and address a number of opportunities and challenges related to the topic. The main goal of ISM experts at different higher education levels (national and local) is to share their professional experiences and insights and provide food for thought for a roundtable debate on the opportunities and challenges of digitalization on ISM



16:30 – 18:00 | Session 2.1 | Trends and experiences of ISM

Chair: Fiona Hunter | University of the Sacred Heart Milan

A longitudinal study of Chinese students' application experiences to UK universities via education agents using interpretative phenomenological analysis

Ying Yang (The University of Manchester)

International Student Mobility Trends at Public and Private Higher Education Institutions in Türkiye

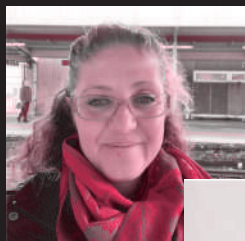
Sevgi Kaya-Kasikci (Boston College), Merve Zayim-Kurtay (Middle East Technical University) & Yasar Kondakci (Middle East Technical University)

Strategies of social reproduction: medical students from Germany in central and eastern Europe from a centre-periphery perspective

Gregor Schäfer (University of Copenhagen)



SPEAKERS & CHAIRS | Who's who



16:30 – 18:00 | Session 2.2 | Session of WG3 (social and cultural integration of students)

Chair: Betül Bulut Şahin (Middle East Technical University) & Zeynep Köylü (University of Basel)

The role of languages in shaping sociocultural integration during SA

Sanja Marinov Vranješ (University of Split) & Višnja Pavičić Takač (University of Osijek)

Fishbowl Activity on Researcher-Practitioner Collaboration on ISM and Sociocultural Integration

Betül Bulut Şahin (Middle East Technical University) & Zeynep Köylü (University of Basel)



16:30 – 18:00 | Session 2.3 | Contextualizing practices, challenges, and potentials of virtual internationalization for teaching, learning, and university collaborations

Chair: Jana Berg | German Centre for Higher Education Research and Science Studies & Luzia Ferreira Santos | German Centre for Higher Education Research and Science Studies

Digital Educational Offers for Prospective Students With a Refugee Background – Insights of the German Success Project

Sarah Nell-Müller (Johannes Gutenberg-University Mainz), Roland Happ (Leipzig University) & Olga Zlatkin-Troitschanskaia (Johannes Gutenberg-University Mainz)

Becoming a digital citizen in Estonia? International students' participation in host society

Airi-Alina Allaste (Tallinn University)

Multiple Competitions and Social Values as Facilitators of Virtual Internationalization – Evidence from German Higher Education

Jana Berg (German Centre for Higher Education Research and Science Studies) & Luzia Ferreira Santos (German Centre for Higher Education Research and Science Studies)





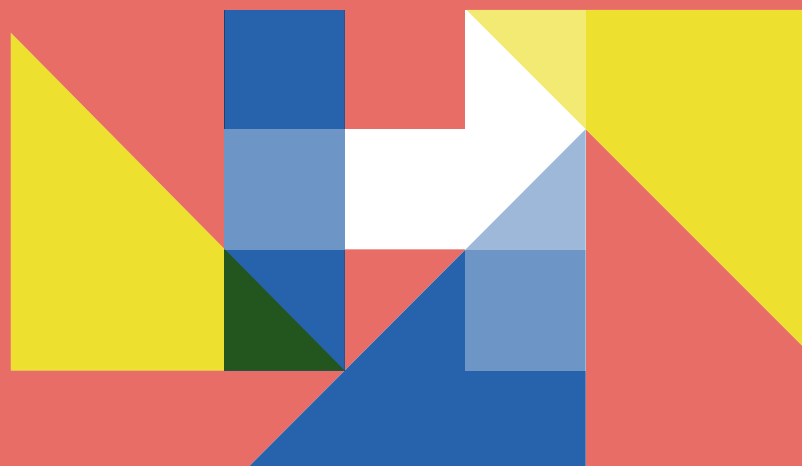
European Network on International Student Mobility
Connecting Research and Practice

14 | may

tuesday

day 2
**Conference
programme**

Join us online **here** ▶



day 2 schedule

14 | may



BUSINESS AND TECHNOLOGY UNIVERSITY

**10:00-11:30**

Workshop on connecting research and practice |
Central Event Room
Adriana Perez-Encinas (Autonomous University Madrid) & Wim Gabriels (Erasmus Student Network)

**11:30-12:00**

Coffee break

**12:00-13:30**

Session 3.1 | Central Event Room
Global ISM flows

Session 3.2 | Event Room, 4th Floor
Outcomes of international student mobility

Session 3.3 | Room 303, 3rd Floor
Social and cultural integration of international students

**13:30-14:30**

Lunch break

BTU yard

**14:30-16:00**

Plenary session of WG5 |
Event Room, 4th Floor
Giorgio Marinoni (International Association of Universities) and Cosmin Nada (University of Porto)

**16:00-16:30**

Coffee break

**16:30-17:00**

Poster session

Central Event Room

**17:00-18:00**

World Café session

 Event Room, 4th Floor**19:30**

Joint dinner

Restaurant ETNOGRAPHER

SPEAKERS & CHAIRS | Who's who



10:00 – 11:30 | Workshop

Connecting research and practice

**Adriana Perez-Encinas (Autonomous University Madrid)
& Wim Gabriels (Erasmus Student Network)**



12:00 – 13:30 | Session 3.1 | Global ISM flows

**Chair: Yasar Kondakci (Middle East Technical University)
& Queenie Lam (Y-Europe Consulting)**

**International Student Mobility: Pushing-pulling Factors for
Albanian international students**

Denada Liça & Silvana Gashi ("Aleksander Moisiu" University of
Durrës)

**Language as a macro-level driver of international student
mobility**

Farkhad Alimukhamedov (Le Laboratoire des Sciences Sociales du
Politique - Sciences Po Toulouse)

**Foreign language skills in the study abroad decision-making
process and destination choices**

Alyona Ovchinnikova (University of the Sacred Heart Milan), Christof
Van Mol (Tilburg University) & Elspeth Jones (Leeds Beckett
University)



SPEAKERS & CHAIRS | Who's who



12:00 – 13:30 | Session 3.2 | Outcomes of international student mobility

Chair: Jannecke Wiers-Jenssen | NIFU & John Cullinan | University of Galway

Does study abroad pay off during recruitment? - Evidence from a labour market experiment in the Netherlands, Belgium and Spain

Christof Van Mol (Tilburg University), Martyna Ozaist (Tilburg University), Adriana Perez-Encinas (Autonomous University Madrid) & Paola diMarzo (Erasmus Student Network)

The Labor Market Effects of Studying Abroad: Evidence from the United States

Daniel Klasik (University of North Carolina at Chapel Hill) & Melissa Whatley (SIT Graduate Institute)

The career impacts of professional education undertaken abroad

Ann Cecilie Bergene (NIFU), Ida Drange (NIFU) & Jannecke Wiers-Jenssen (NIFU)



12:00 - 13:30 | Session 3.3 | Social and cultural integration of international students

Chair: Hans de Wit | Boston College

Navigating Cross-Cultural Waters: A Qualitative Case Study on the Social and Cultural Integration of International Students

Mete Sipahioglu (Samsun University)

International students and everyday multiculturalism: Rethinking community connections

Jenna Mittelmeier (University of Manchester)

The pedagogy of studying abroad: A case study of Chinese students in the Netherlands

Lina Jiang (University of Amsterdam)



SPEAKERS & CHAIRS | Who's who



14:30 – 16:00 | Plenary session of WG5

Chair: Giorgio Marinoni | International Association of Universities, Cosmin Nada | University of Porto & Irina Ferencz | ACA

Examples of cooperation between researchers and practitioners in Working Group 5

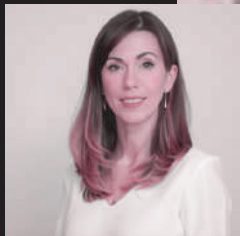
Irina Ferencz (ACA), Cosmin Nada (University of Porto) & Betül Bulut Şahin (Middle East Technical University)

Discussion between researchers, practitioners and the public

Joyce Aguiar (Centre for Research in Higher Education Policies - Portugal), Annette Kratz, Christof Van Mol (Tilburg University) & Bozidar Grigic (CMEPIUS)

Campfire – a better view on student mobility outside the ivory tower

Adriana Perez-Encinas (Autonomous University Madrid), Rúna V. Guðmarsdóttir (Rannis), Eero Loonurm (Study in Estonia) & Wim Gabriels (Erasmus Student Network)



16:30 - 17:00 | Poster session

Short-Term programmes and international mobility: Analysis of impact on students from a Disadvantaged Background in the UK

Alizée Cordes (Teesside University)

Integration into Academic and University Life. The Experiences of First-year International Students

Georgina Kasza (Tempus Public Foundation)

Understanding the Motivations for International Graduate Student Mobility to Norway – Navigating Decisions to Pursue a Master's Degree Abroad and within the Context of the COVID-19 Pandemic

Tracy Waldman (University of Oslo)

How difficult is it to make a friend with a local person in a small post-communist country? Experiences of the friendship-making process by the international students at Vilnius University, Lithuania

Ivan Trunov (Vilnius University)

Chinese Sojourners' Social Network during Study Abroad: an Ecological Perspective

Yuyao Xiao (University College Cork)

Migration for Their Future: Indonesian Student Abroad Story

Inayah Hidayati (Research Center for Population, National Research and Innovation Agency – BRIN)

What role does marketing play in internationalization of higher education? Results from a global institutional survey

Anita Kéri (University of Szeged & Tilburg University) & Giorgio Marinoni (International Association of Universities)



day 2

14 | may

SPEAKERS & CHAIRS | Who's who

16:30 - 17:00 | Poster session

Brazilian Undergraduate Students and International Mobility: An Assessment of the Impact of Study Abroad and Academic Performance

Rogério Ferraz dos Santos (ESPM), Fernando Luís Abegão Neto (ESPM), Vivian Iara Strehlau (ESPM) & Cristina Helena Pinto de Melo (ESPM)

How do UK universities prepare for potential funding loss from international student tuition fees? Preliminary findings from two institutional case studies

Georgiana Mihut (University of Warwick), Joana Almeida (University of Warwick), Zhe Chen (University of Warwick), Hongzhi Zhang (Monash University), Philip Wing Keung Chan (Monash University)

Ukrainian university students in Slovakia: Explaining student mobility before and during the war

Michaela Pilová (Slovak Academy of Sciences) & Miloslav Bahna (Slovak Academy of Sciences)





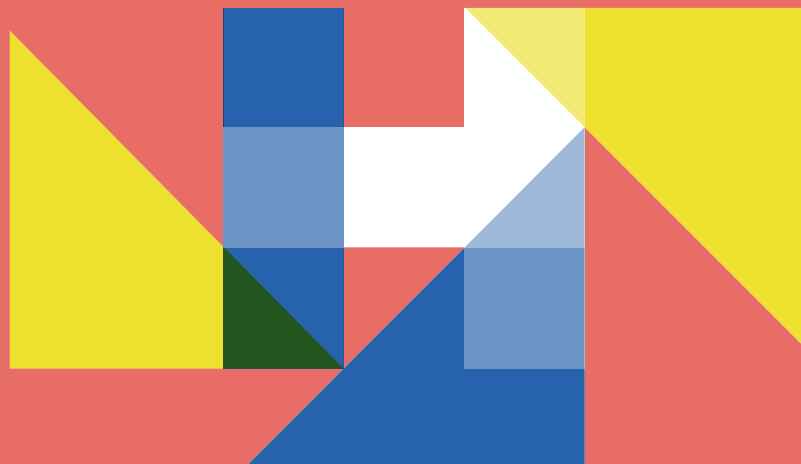
European Network on International Student Mobility
Connecting Research and Practice

15 | may

wednesday

day 3
**Conference
programme**

Join us online **here** ▶



day 3 schedule

15 | may

**BUSINESS AND TECHNOLOGY UNIVERSITY | Central Event Room****10:00-11:30**

Workshop on publishing on international student mobility
Fiona Hunter (Catholic University of the Sacred Heart | Editor of the Journal of Studies in International Education) and Elspeth Jones (Leeds Beckett University | Editor of the Routledge Internationalization in Higher Education book series)

**11:30-12:00****Coffee break****12:00-13:00****Closure keynote**

Emanuelle Gardan (Coimbra Group)

**13:00-13:30****Closing remarks**

Nicolai Netz (ENIS Vice-Chair | DZHW) & Christof Van Mol (ENIS Chair | Tilburg University)

**13:30-14:30****Lunch break**

BTU yard

**14:30-18:00****WG sessions**

Open to all ENIS WG members

**WG1** | Central Event Room**WG2** | Meeting Room 210 - 2nd Floor**WG3** | Event Room - 4th Floor**WG4** | Meeting Room - 5th Floor (Webster University Campus at BTU)**WG5** | Room 303 - 3rd Floor

day 3

15 | may

SPEAKERS & CHAIRS | Who's who



10:00 – 11:30 | Workshop

Publishing on international student mobility

Fiona Hunter (Catholic University of the Sacred Heart | Editor of the Journal of Studies in International Education) and Elspeth Jones (Leeds Beckett University | Editor of the Routledge Internationalization in Higher Education book series)



12:00 – 13:00 | Closure keynote

TBA

Emanuelle Gardan (Coimbra Group)



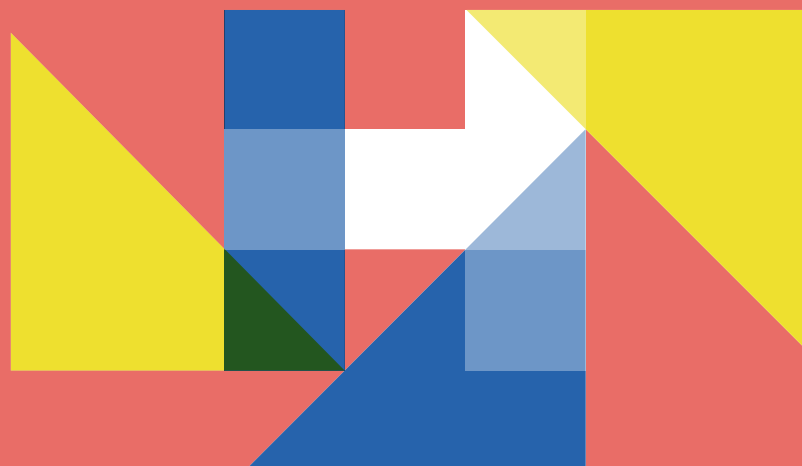


European Network on International Student Mobility
Connecting Research and Practice

Tbilisi

Georgia

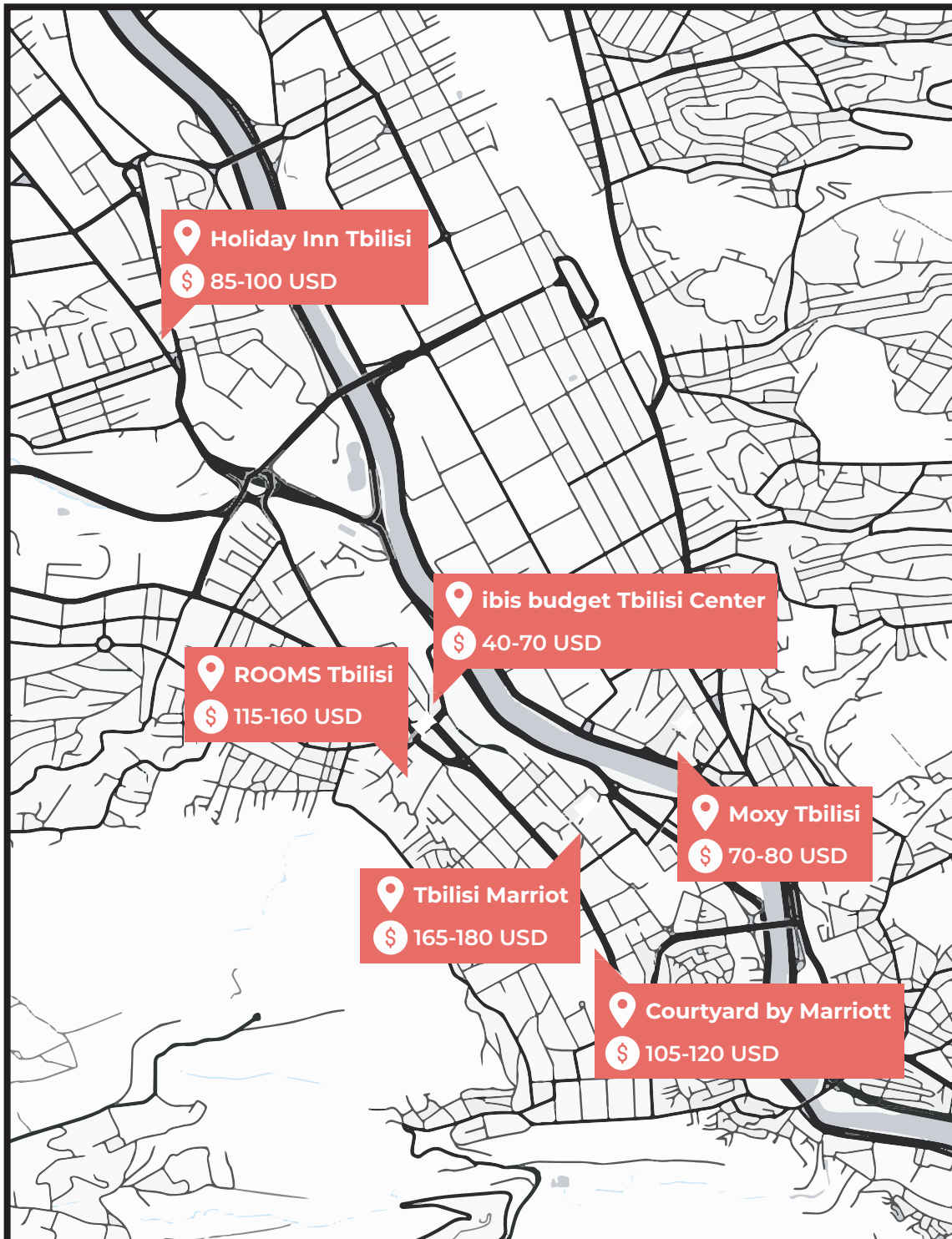
Hotels
Accommodation
suggestions



where to stay

HOTELS | Prices & Location

Click on your hotel to get more info



Acknowledgments

We would like to thank the following people (in random order) for their support in the organization of the conference:

Ani Chelishvili
Tamar Lominadze
Wim Gabriels
Merve Zayim Kurtay
Denada Lica
Pawel Bryla
Eero Loonurm
Daniel Klasik
Rúna V. Guðmarsdóttir
Judith Borràs
Metem Sipahioglu
John Cullinan
Georgina Kasza
Neslihan Onder-Ozdemir
Joyce Aguiar
Mette Ginnerkov-Dahlberg
Antonina Levatino
Annette Kratz
Martin Howard
Elina Apsite-Berrina
Jannecke Wiers-Jenssen
Donal Palcic
Darragh Flannery
Betul Sahin
Emre Guvendir
Kutay Uzun
Alexander Seal
Anu Harkonen
Soren Carlson
Per Nilsson
Cristina Sin
Zeynep Köylü
Yakup Öz



European Network on International Student Mobility
Connecting Research and Practice



Want to join the ENIS Network?

Submit your application here

Follow us



@ENISnetwork



ENIS Cost Action



ENIS Network



Funded by
the European Union

www.enisnetwork.com



www.cost.eu